



Picnic at Mavora Lakes, Southland

Tranzscript

New Zealand's Best Senior Travel Club

Join New Zealand's Senior Travel Club and travel with like-minded people on our tours.

Book your seat today
0800 471 227

MAY 2025 | WELLINGTON

Contents

- 2** Welcome
- 3** Your Tranzit touring family
- 4** Featured tours
- 6** Day tours
- 8** Spend a few days away with us
- 12** Overseas Experiences



YOUR TOURS TEAM

Welcome

Winter is coming and as the days grow shorter, our touring schedule winds down a notch, though we are looking forward to experiencing Napier in June for a few fun days.

It has been a busy few months out there on the road. Recently home and still getting the washing dry is our Gentle Annie tour group, telling us the highlight of their tour was a visit to the vast Timahanga Station up there in the rare air of the central plateau - the farm road into the station alone was a staggering 19 kilometres. Our Greenstone Trail group arrived home earlier in April refreshed and feeling very connected to nature after travelling and walking through the rainforests of the West Coast.

We urge you to take a look at our upcoming tours, with our latest round of exciting itineraries released. On page 6 our day tours are featured including our June outing, when we've rounded up a great grazing venue for our Mid-Winter lunch. In August, we take you on an old fashioned "roadie" over the new Manawatu Tararua Highway. World of Wearable Arts fans, your time starts now... don't miss out on securing your seats for this year's extravaganza in Spring.

Sadly we lose Fleur this month as she moves on to explore new adventures. We wish her all the best!

Warm wishes from the Tours Team.



Photo stop at Lake Pukaki

Touring Icons

A quick visual guide for what you're in for.



Heritage

NZ's home and gardens on show



Culture

Shows, history and the arts



Wine and Food

Enjoy local delights on tour



Flight/s included

Get to your destination quicker



Walking

A good level of fitness is required



Travel by Train

Train enthusiasts a must!



Boat trip offered

Enjoy a cruise on the water



Escape to nature

Nature and natural history

Your Tranzit touring family...

Ali



Robin



Anil



Craig



Andre



Les

Quick tour guide

June

- » Mid Winter in Napier

August

- » Northern Explorer Short Break

September

- » Fraser Island
- » Mountains to Sea
- » Forgotten World Highway

October

- » Far North
- » Melbourne & Great Ocean Road
- » Ride the Rails
- » Hurunui Gardens

November

- » Molesworth
- » Deep South
- » East Cape

December

- » Chathams
- » The Kaimanawa Horses
- » Christmas in Rotorua

Featured Tours

The Forgotten World Highway

29 September - 3 October - Phone NOW for an itinerary



Experience this remote and mysterious journey, as we wind our way over saddles, through gorges, tunnels and dense forest. The “republic” of Whangamomona, the hand-hewn Moki tunnel, and the remarkable Tangarakau Gorge are highlights on this scenic route that follows an old heritage trail. Remote Northern Taranaki scenery also features, from fascinating limestone formations to wild coastal beaches, sea cliffs and volcanic rock stacks.

Read a sample of the itinerary:

Travelling the Forgotten World Highway

Today we travel this historic route, enjoying lunch at the historic Whangamomona Hotel, New Zealand's most remote country pub. There will be a chance to wander this tiny village before we travel over the Tahora Saddle, a spectacular vantage point for unsurpassed views of the central North Island mountains and surrounding hill country. Passing through the Moki Tunnel, we'll wind down into the Tangarakau Gorge where we stop to take in the ambience of the final resting place of Joshua Morgan, a surveyor who assisted paving the way for road and rail through this difficult terrain.

“Experience this remote and mysterious journey”

Ride the Rails

23-30 October 2025 - Phone NOW for an itinerary!



One of our most popular tours you won't want to miss! The world renowned TranzAlpine (Greymouth to Christchurch) and the scenic Coastal Pacific (Blenheim to Christchurch) excursions are unquestionably the special highlights. We also discover vintage and branch lines in Canterbury and on the wildly scenic West Coast, visit the famous Denniston Incline and enjoy a special dinner on the iconic Christchurch Tram. All of this is topped off with the opportunity to talk to genuine railway enthusiasts and learn about the unique history of NZ rail.

Read a sample of the itinerary:

Coastal Pacific to Christchurch

This morning we join the Blenheim Riverside Railway - an 11km train excursion along the banks of the picturesque Taylor River from Brayshaw Park Station to Beaver Station. We visit the Marlborough Museum, which highlights the rich history of early Marlborough and have time for lunch in town before boarding the Coastal Pacific train. Featuring an open-air viewing carriage, this journey allows a scenic feast of southern New Zealand, with the Kaikoura mountain ranges on one side of our train and the rugged Pacific Ocean coastline on the other.



“Rediscover the joys of train travel”

Day Tours

Mid-Winter Lunch at Waterfront Kitchen

Thursday 12 June

Join us for our midwinter lunch today in a charming setting on the Kapiti Coast. First, we visit Southward Car Museum at Paraparaumu, this renowned attraction featuring over 450 cars and several aircraft, the majority of the cars the collection of Len Southward who set up the museum in the 1970's. A new exhibit detailing Len's life and achievements is a highlight. Moving on to our lunch venue, Waterfront Kitchen is just a stone's throw from the beach at Raumati, offering great coastal views and good food, the perfect venue for a wintry catch up.

Please advise any dietary requirements when booking

Meet: 9.15am Bunny Street, outside McDonalds

Depart: 9.30am by coach

Return: 4.30pm Bunny Street, outside McDonalds

Price: \$161.00– due by 29 May

Includes: Coach, museum entry and lunch

Banking reference:

Waterfront25



Midwinter Lunch - Kapiti Coast

Manawatu Gorge Road Trip

Friday 15 August - Book now, you don't want to miss out!

The anticipated Manawatu Tararua Highway (Te Ahu a Turanga) is finally open, so today is about experiencing this exciting new section of roading. Lunch today is at one of our favourite venues, Verdict Café in Palmy, where great food is guaranteed. After lunch we'll show you a beautiful mural a short walk from our lunch venue, celebrating the domestic cat. This mural is truly magnificent. We then set off over the new 11.5km highway, driving over six bridges and structures, seeing around 2 million new plants, and a shared walking/cycling trail among a host of other features. We will travel back over the scenic Saddle Road where you can wow at the giant wind turbines dotting the surrounding hills.

Please advise of any dietary requirements when booking.

Meet: 9.15am Bunny Street, outside McDonalds

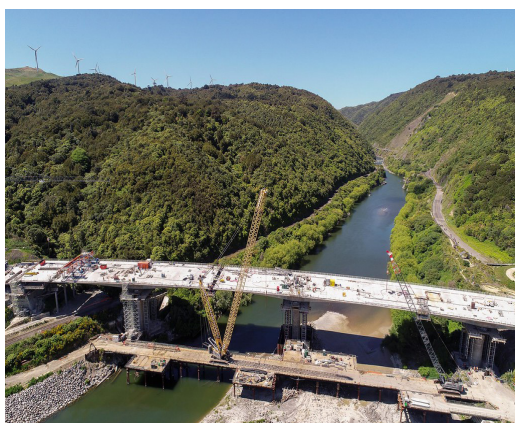
Depart: 9.30am by coach

Return: 5.30pm Bunny Street, outside McDonalds

Price: \$144.00 – due by 1 August

Includes: Coach and lunch

Banking reference: Gorge25



Parahaki Bridge on the new road



Southward Car Museum

Photo Credit - Visit Wellington

Travel Club Terms and Conditions

Paying by internet for Travel Club Trips

For those of you wanting to pay by internet, there have been a few changes instigated by the NZ banking industry, to help reduce the risk of people making mistakes and paying the wrong person and to help avoid payment scams when making payments.

You will now be required to provide the following information when making a payment:

Your name: please provide your name

Our account name: Tranzit Coachlines Wairarapa Limited

Tranzit Tours Account number: 02-0688-0127658-00

Reference: please use the reference listed for each of our tours and day trips, which you will find in the pricing information for each tour or trip (eg Palliser24)

Other ways to pay:

For your convenience, you can also make payment the following ways:

- Phone us with your credit card details
- Drop in to see us with card or cash (Wairarapa & Manawatu members only)

Spend a few days away with us.

Tours for 2025

Give us a call to request an itinerary or register your interest if something takes your fancy. We look forward to arranging your next holiday!

Mid Winter Christmas in Napier

24-26 June - full, waitlisting.



Enjoy a tour and lunch at the historic Ashcott Homestead and get hands on at Faraday Museum of Technology. Have a relaxing morning of breathtaking views along the Cape Sanctuary in a guided 4x4 bus tour and sample wines at Craggy Range with its awe-inspiring back drop views of Te Mata Peak.

Northern Explorer Short Break

20-22 August - **BOOK NOW**
only a few spots left!



This tour provides the opportunity to travel the 'Northern Scenic' route on the

Northern Explorer train to Taumarunui, featuring numerous soaring viaducts and the engineering marvel of the Raurimu Spiral. This short break stays in Ohakune and is packed full of other attractions including a Dinosaur Museum housed in a beautiful heritage building, unique and charming gardens in the Taumarunui area and one of NZ's largest rural Alpaca farms.



Northern Explorer at National Park

Mountains to Sea

15 - 19 September - **phone now**
for an itinerary



The name paints the picture: from a stay in Ohakune under the shadow of Mount Ruapehu, to relaxing by the sea in Raglan. Discover the silica terraces and geysers of Orakei Korako and cruise the Waikato River to experience the power of the remarkable Huka Falls. Step into the enchanting world

of Hobbiton and enjoy the delicious “fayre” at the Green Dragon Inn.



Hobbiton - Mountains to Sea

The Far North

6 - 15 October - phone now for an itinerary



The Far North tour returns as we plot the history of the unique Northland kauri industry and see ancient kauri. We drive along the endless sands of 90 Mile Beach, cruise to the Hole in the Rock, visit the amazing sculpture park at Matakana, discover the Kumara Capital of Dargaville, and uncover an amazing whaling museum in a remote tranquil spot.



Waipoua Forest - Far North

Hurunui & Marlborough Gardens

29 October - 2 November

Releasing soon - phone now to register your interest



Hurunui Garden Festival is gaining a reputation as a first-class garden event. Gorgeous gardens from all over this region (near Hanmer Springs) open their gates so festival goers can visit gardens of national significance, horticultural delights and elegant rural properties with mountain vistas. View art and sculpture and find inspiration in the gardens of others. We will also be visiting some of our favourite Marlborough Gardens, so don't miss this opportunity to see some of the best gardens in the country.



Hurunui Gardens - Winterhome Garden

Molesworth Station

12-16 November - phone now for an itinerary



This is one of our most popular tours and we've made it even better, introducing you to more remote areas. We use specially designed vehicles that take you comfortably through the soaring back country terrain of Molesworth Station (NZ's largest). BUT THAT'S NOT ALL... we also tour through the stunning and constantly changing landscapes of Rainbow Station and visit a hill country property in the Leader Valley with unique geological features. We use a local guide whose knowledge is extensive, so you will learn the area's history through an informative and entertaining commentary.



**Musterers & Dogs
Molesworth Station**

The Deep South

17 - 26 November - releasing soon - phone to register your interest



Returning in 2025 by popular demand. Join us on our southern-most sojourn as we travel the full Southern Scenic Route from Dunedin via the ruggedly dramatic Catlins Coast to Invercargill, and on to stunning Fiordland. We really get to tick off those bucket list destinations, with a cruise in tranquil Doubtful Sound and an overnight stay on Stewart Island being special highlights.



Deep South - Nugget Point, Catlins

East Cape Escape

24 - 30 November - phone now for an itinerary



Explore the scenically and culturally rich East Cape, viewing beautiful churches, discovering isolated bays and taking roads less travelled.

We ride the rails at Awakeri, stay at stunningly isolated Hicks Bay, stroll on the Tolaga Bay Wharf, and lunch at the local in Waihou and Tokomaru Bays. A stroll through Eastwoodhill Arboretum is another special attraction on this tour that is sure to please.



Raukokore Church - East Cape

Chatham Island

1 - 8 December - phone now to register your interest



We return to this remote part of NZ to discover the unique landscapes and natural history, learn about the lifestyle of the Chatham Islanders and enjoy fabulous meals featuring abundant seafood. Every day is an adventure as our travels uncover unusual geological formations, remote fishing villages and a rich flora and fauna - all interwoven with the unique Chathams history of the Moriori.



Chatham Island - Maunganui

The Kaimanawas

4 - 6 December - phone now to register your interest



A rare opportunity to encounter the famous heritage horses of the Kaimanawa Ranges in their natural habitat. Travelling over NZ Defence land normally closed to the public, we are very privileged to be able to enjoy this experience. We are joined by a Kaimanawa Heritage guide who knows where to find the mares, foals, and stallions roaming free in their family bands amongst spectacular back country scenery.



Wild Horses - The Kaimanawas

Christmas in Rotorua
23 - 27 December - releasing soon - phone now to register your interest

Our festive season commences as we head to Rotorua, a place where the earth breathes and nature paints it's masterpiece. But the Geothermal Capital offers many other special attractions including walking in the canopy of the Redwood Forest, cruising on Lake Rotoiti, viewing a fascinating falcon display at Wingspan Birds of Prey and experiencing a live demonstration of a running 8-dog huskie team.

This will be a Christmas to remember. Join us for a fun and festive time with friends old and new!



Huskies - Christmas in Rotorua

Overseas Experiences

Dates are now confirmed for our 2025 Australian adventures, so phone us now to register your interest for these great opportunities.

K'gari (Fraser Island)

2 - 9 September - take a look at this new destination and phone to register your interest



World Heritage listed Fraser Island, known as K'gari (meaning paradise) is known for its natural wonders, unspoilt beaches, fantastic weather year-round and incredible scenery. This tour also takes in the sights of Brisbane and Hervey Bay - a recognised whale migratory path, and where we join a special whale watch cruise.



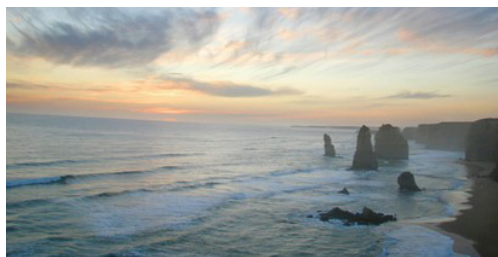
Whale Watching - Fraser Island

Melbourne and the Great Ocean Road

12 - 19 October - phone now to register your interest



An eight-day tour exploring the best of Melbourne, from its parks and gardens to its gracious buildings, sporting venues, the Yarra River and Phillip Island. This tour also features the Great Ocean Road, one of Australia's most scenic drives. We discover the amazing Twelve Apostles and other incredible formations fashioned by nature, learn about the history of the "shipwreck coast" at Warnambool, and find out about the gold rush



Great Ocean Road - Australia

Heritage & Cultural Tour of India 2026

Anil has returned from his visit to India to visit family and while he was there, he explored the possibilities for this tour. We'll keep you updated on progress, so keep your eyes peeled on this page.



The Taj Mahal - Agra, India
Credit Photo: Anil Sharma

Cairns and Port Douglas

We are now looking towards 2026 for this popular winter destination.



Skyrail in Cairns - Australia

The Concert Club

We've been talking about the good old days when we used to go to many more concerts and shows, and we are keen to start offering more opportunities to go to shows, the symphony orchestra, ballets and Circa Theatre performances once again. Please give us a call or send us an email if this would be of interest in joining to you. We look forward to an evening of culture with you soon.

Out and about with Tranzit Tours

Fabouloous snaps from our more recent tours - Thanks to Ali and Andre for the great photography.



**West Coast
tree top walk
April 2025**



**Punakiki Rocks
West Coast
April 2025**



**Secluded spot on the
shore - Lake Wanaka
March 2025**



**4X4 touring - West Wanaka
March 2025**



**Happy travellers - West Wanaka
March 2025**



**Tea break! - Whangamata
April 2025**



**Cape Foulwind - West Coast
April 2025**

Do you need a Guest Speaker?

Our tours team have been out and about over the last few months, visiting members' villages and clubs to talk about our tours and travel club and have thoroughly enjoyed our time meeting folk. We are planning another series of visits around the lower North Island this year, so if you think it may be something your club or village might be interested in, do give us a call, we'd love to visit.

Keep us In the Loop

Have you recently moved, got a cell phone, got rid of your landline or changed your email address? Do let us know, as we don't want you to miss out on receiving all the latest news about our exciting tours. If you don't want to receive our newsletters any longer we won't be hurt, we would rather know than keep annoying you with unwanted mail.

Needing a great gift?

The perfect gift for any occasion is a Tranzit Tour gift voucher. They can be made out for any nominated amount, and best of all there's no tiresome expiry date. Give us a call or drop in and see us and your gift giving troubles will be over.

The important stuff:

Our promise: Tranzit Tours is a fun and adventurous team, where you always come first.

The Tranzit Tours difference gives you:

Door to Door Transfers

We never compromise on your comfort or safety – from the moment we pick you up from your front door, to the moment we drop you off at home.

All inclusive

From the moment our driver collects you from the front door your journey with us is convenient, relaxing and stress free. All your costs are paid for up front - accommodation, dinners, attractions and transfers. There are no hidden extras.

Destinations & Attractions

Our tours offer a mix of big-ticket wow factor attractions and destinations such as Doubtful Sound, the Moeraki Boulders and Taupo to lesser-seen landscapes - all from the seat of a comfortable coach.

To discover more of our tours and for full itineraries visit www.tranzittours.co.nz



Hokitika Sunset - from our Greenstone Trail tour

Book now

For enquiries and reservations call:

06 370 6600 ext 2

0800 471 227

9:30am - 4:00pm, Monday - Friday

Email: tours@tranzit.co.nz

PO Box 116, Masterton 5840

Head Office: 316 Queen Street, Masterton



[tranzittoursnz](https://www.tranzittoursnz) w: [tranzittours.co.nz](https://www.tranzittours.co.nz)